



marantz®

Integrated Amplifier
PM8006

Quick Start Guide

Guide de démarrage rapide /
Guía de inicio rápido

Read Me First....

Lisez-moi en premier... /
Lea esto primero....

ENGLISH

FRANÇAIS

ESPAÑOL

Welcome

Thank you for choosing a Marantz amplifier.
This guide provides step-by-step instructions
for setting up your amplifier.

**Please do not return this unit to the store –
call for assistance.**

If you need help... :

If you need additional help in solving problems,
contact Marantz customer service in your area.

1-855-ONE-Marantz

1-855-663-6272

Call for Assistance:

Monday – Friday 10:00AM to 10:00PM E.S.T.

Saturday 12:00PM to 8:00PM E.S.T


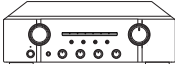




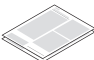

For frequently asked questions please visit

<http://marantz.custhelp.com/app/answers/list>

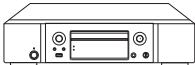
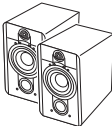

For US and Canada only

Before You Begin

What's In the Box

Quick Start Guide		Amplifier	
Owner's Manual		Power cord	
Safety Instructions		Remote control unit	
Warranty (for USA/for CANADA)		R03/AAA batteries	

Required for Basic connections

		
CD player	Speaker systems	Speaker cables



- These drawings are for illustrative purposes only and may not represent the actual product(s).

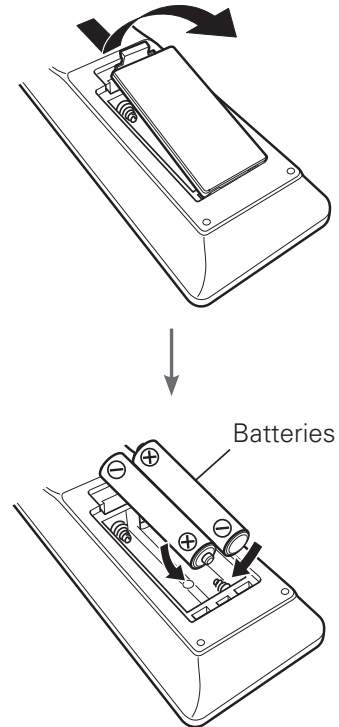
Setup

There are six steps to the setup process.

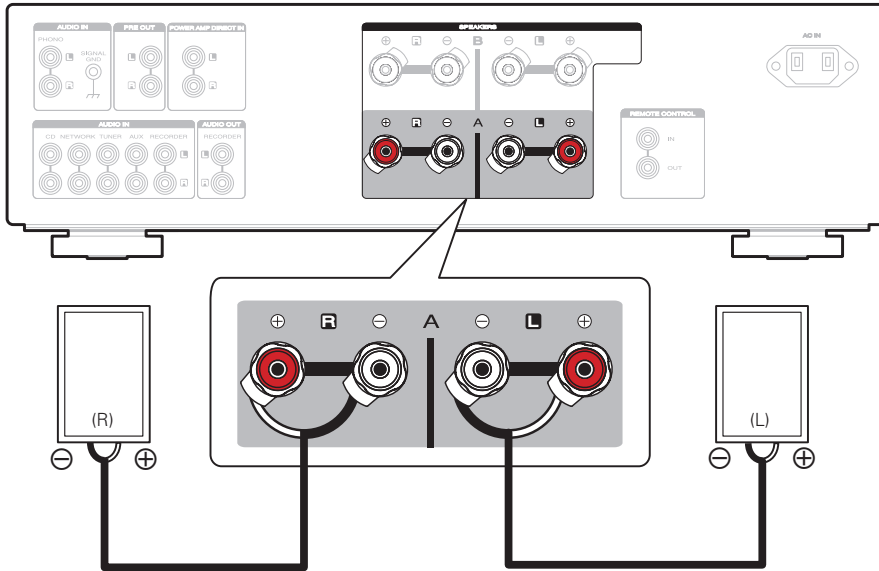
- 1** Install batteries in the remote control unit
- 2** Connect the speakers to the amplifier
- 3** Connect the CD player to the amplifier
- 4** Plug the power cord into a power outlet
- 5** Turn on the power of the amplifier and then set the speakers for audio output to **SPEAKERS A**
- 6** Begin playback

1

Install batteries in the remote control unit

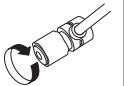
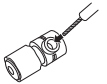


2 Connect the speakers to the amplifier

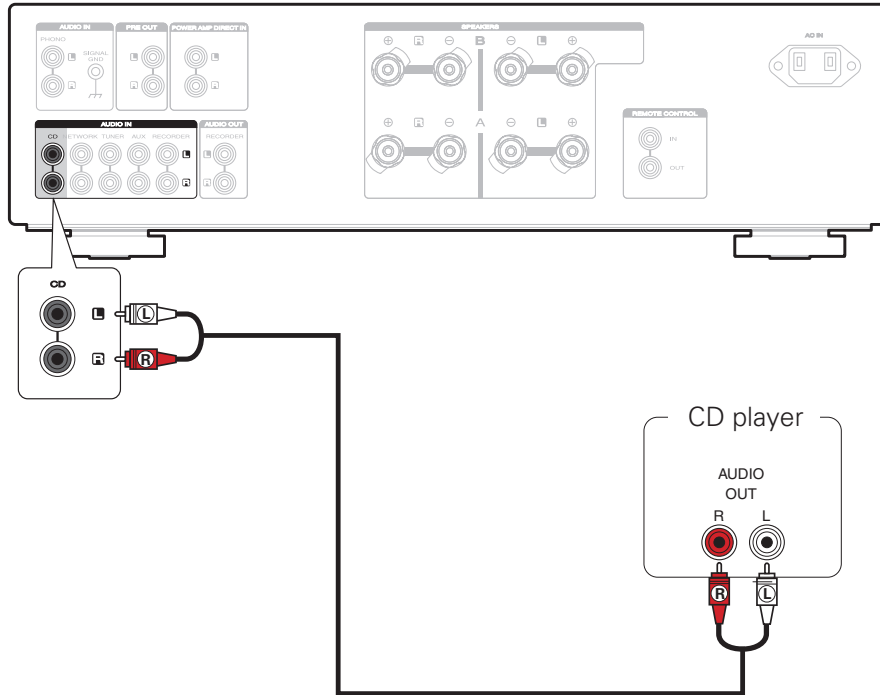


Connecting the speaker cables

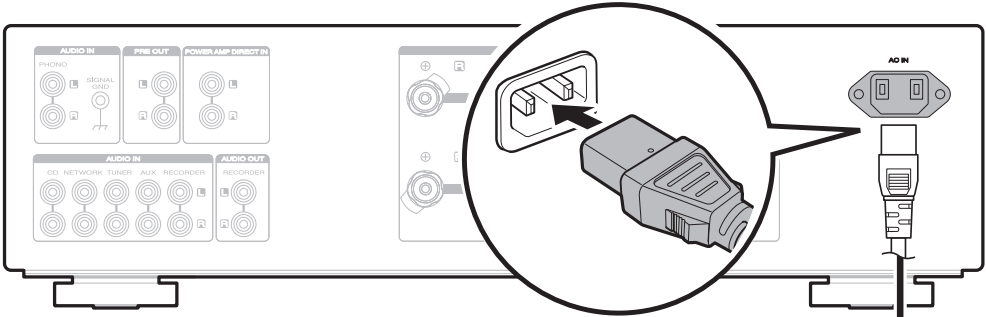
- ① Peel off about 3/8 inch (10 mm) of sheathing from the tip of the speaker cable, then either twist the core wire tightly or apply solder to it.
- ② Turn the speaker terminal counterclockwise to loosen it.
- ③ Insert the speaker cable's core wire to all the way into the speaker terminal.
- ④ Turn the speaker terminal clockwise to tighten it.



3 Connect the CD player to the amplifier



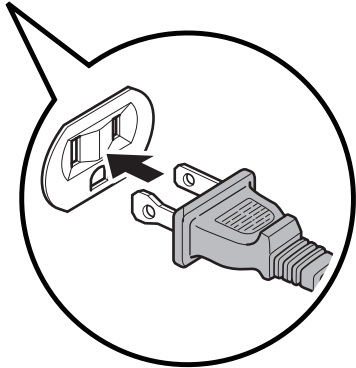
4 Plug the power cord into a power outlet



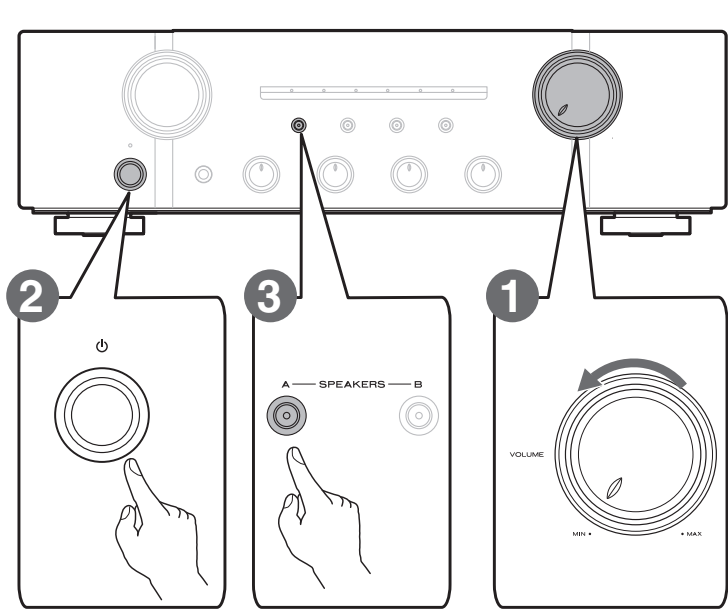
Connect to household power outlet (AC 120 V, 60 Hz)



Power cord (supplied)

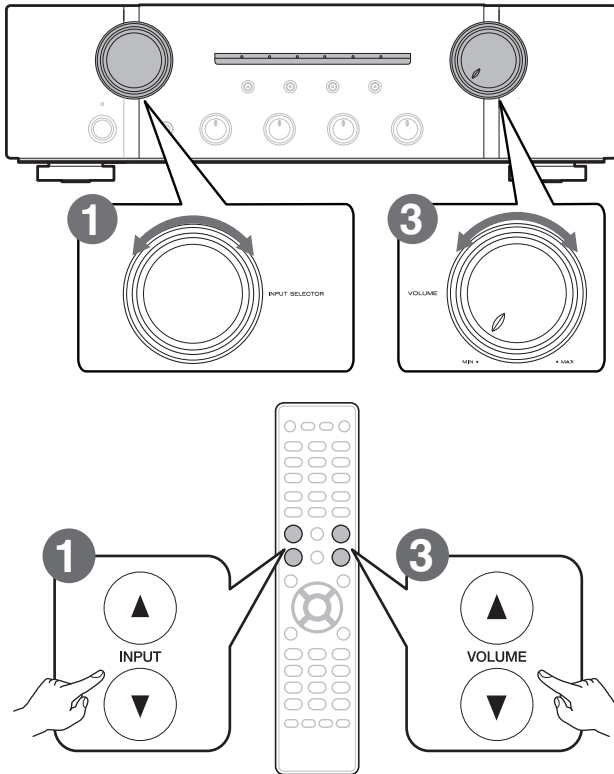


5 Turn on the power of the amplifier and then set the speakers for audio output to SPEAKERS A



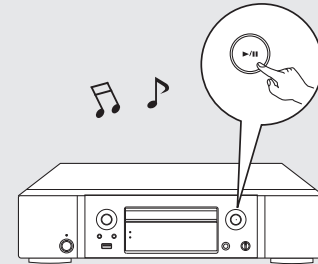
- 1 Reduce the volume to the minimum level.**
- 2 Press the power operation button.**
- 3 Press SPEAKERS A.**
The SPEAKERS A indicator lights and the speakers for audio output are set to SPEAKERS A.

6 Begin playback



1 Set the input source to “CD”.

2 Play the CD player.



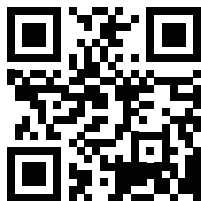
3 Adjust the volume.

Owner's Manual

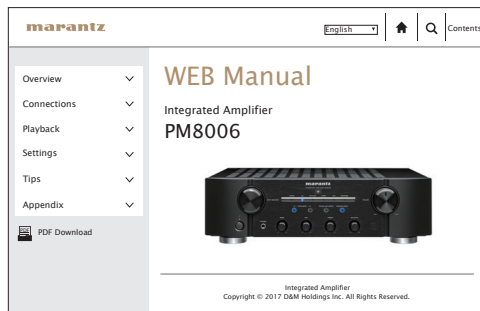
Please reference to the Owner's Manual for more details about the setup and operation of the amplifier and its features.

❑ Online Version

Enter the following URL into your web browser:
manuals.marantz.com/PM8006/NA/EN/



Online Manual

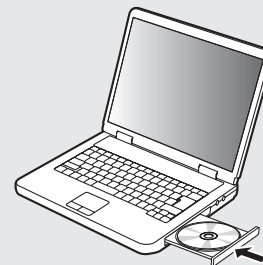


❑ Printable Version

Access the print version of the owner's manual from the included CD-ROM or select the "PDF Download" link from the Online Version.

1

Insert the disc into your PC.



2

Follow the screen or double click on the PDF file.

www.marantz.com

You can find your nearest authorized distributor or dealer on our website.

marantz[®] is a registered trademark.